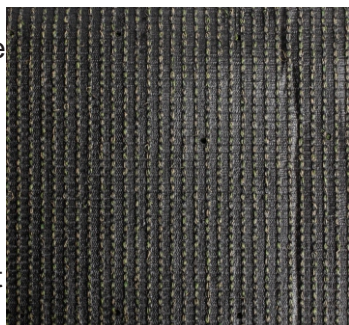


# HAMMOND 85

**Face Weight:** 85 oz  
**Total Weight:** 115 oz  
**Pile Height:** 1.85"  
**Yarn:** PE Monofilament Polyethylene  
(W Shape) + PP Curl  
**Yarn Color:** Emerald & Sage Green  
**Thatch:** Texturize PE  
**Thatch Color:** Brown  
**Backing:** 30oz Polyethylene  
**Coating:** Double Fabric PU glue  
**Machine Gauge:** 3/8"  
**Infill:** recommended  
**Infill Ratio:** up to 1.5 lbs per sq/ft  
**Drain Rate:** 30" per hour  
**Full Roll:** 15 x 100'  
**Warranty:** 10 years  
**Flammability Test:** Pass  
**Lead Test:** Pass  
**Solar Status:** UV resistant  
**Turf Temp Rating:** - 15%  
**Softness Rating:** 4 of 5  
**Visual Rating:** 4 of 5  
**Intended Use:** Landscape applications, Moderate to Heavy Traffic, Cross compatible multi-purpose.



"HAMMOND 85 is arguably our best "bang for the buck" turf grass and probably our most popular. Well at least last year it was. Anyway! It's a perfect balance of high performance, superior aesthetics and a great price. The Lakeview is a high performance commercial grade turf product that bridges the gap between our more high traffic based lower pile height pet focused products to our higher pile height super lush more urban landscape based turf products. Very nice to the touch but also very wear resistant and responds very well to brushing which means the blades snap back into a more vertical setting once broomed. It's a great fit for moderate to heavy traffic areas. backyards, roof decks, sport fields and children's play areas where a higher performance built in GMAX is desired." - The INDIANA TURF Team

